

## Reading

It is an expectation that your child is reading for 10-20 minutes each day.

It is most important that your child reads EVERY DAY.

After reading with your child, it is helpful to ask them questions about what they have read. We want to develop their skills of understanding, inference and deduction. For them to understand why the writer has selected the words they have; and what effect the punctuation has had on the piece. It's also great if they can start identifying WOW words. These are exciting and adventurous words which will feed directly into their writing.

Developing reading skills is important for each aspect of the curriculum, and also assists with a strong understanding of the wider world.



If you have any questions or queries please do not hesitate to contact us.



Please follow our school Instagram and website for school news and updates.

@bettylayward

[www.bettylayward.hackney.sch.uk](http://www.bettylayward.hackney.sch.uk)

## Betty Layward now has an APP!

Please download our app (available for Apple and Android).

Messages and information will be sent out via the app. Please visit 'settings' to subscribe to relevant channels (ensure you have 'urgent' ticked).

Important dates, surveys, school information, news, contacts, alerts, reminders will all be sent out via the app.



## Betty Layward Primary School Year 6 Class Newsletter Autumn 1 2018

We would like to welcome all of the children back for their final year at Betty Layward!

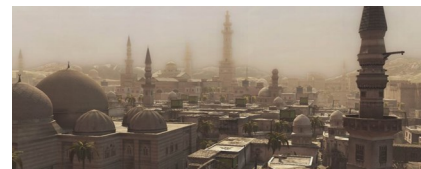
We are all very excited to be working with year 6 this year. It's always a very busy year, filled with new learning experiences, plenty of extra-curricular activities, trips...and of course... Kingswood and the Year 6 Show.

There is a meet the teacher parent information session on Monday 17th September at 3:30pm in the classroom. Here we will be able to discuss the plans for the year, upcoming trips, assessments, etc; and also answer any questions you may have about the year.

We are looking forward to working with you this year to ensure your child has a memorable and enjoyable final year at Betty Layward.

Helen, Briony and the Year 6 Team

For this half term our history topic is:



### The Islamic Civilization

Also known as 'The Golden Age', we will discover what this civilization gave to the world. We will explore ancient advancements in medicine, architecture and art. Children will research the 'House of Wisdom' and find out about the prophet Muhammad. We will also explore how this civilization came to an end.

## Announcements

- Year 6 Chilli class assembly will be on Thursday 4th October at 9.15am in the school hall. We invite parents and carers of Chilli class to attend.
- Applications for secondary schools need to be completed online. We will be having a meeting to support parents with their applications on **Monday 1st October at 3:30pm.**
- We are very lucky to have Jenny ,our new deputy head working with Year 6 this year.

## PE:

P.E will take place on **Tuesdays** for both Chilli and Ruby Class. Students must bring PE kits for these lessons.

We will also be doing the mile run on Tuesday and Thursday mornings.



## SWIMMING:

Each class will be having swimming lessons this term, every child must have appropriate swimming kit as it's a requirement of the curriculum.

**RUBY: Tuesday**

**CHILLI: Wednesday**

## English

We will be:

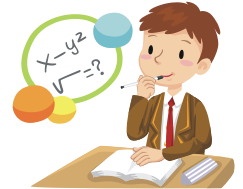
- Writing recounts—both fact and fiction.
- Writing narratives.
- Writing book reviews.
- Studying and writing our own poetry which will link in to National Poetry Day on October 4th
- Revising our Spelling, Punctuation and Grammar knowledge.



## Maths

We will be:

- Revising place value.
- Revising our methods for addition, subtraction, multiplication and division.
- Looking at word problems.
- Working on our problem solving techniques.
- Reviewing key mathematical language.



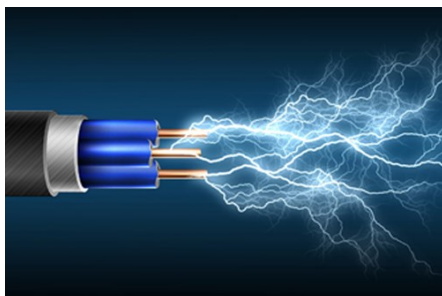
**How much do you already know about electricity?**

## Science

# ELECTRICITY

We will be:

- Investigating current and voltage.
- Building circuits.
- Comparing variations in how electrical components function.
- Exploring the use of circuit diagrams.
- Investigate power stations.



## Religious Education

We will be:

- Learning about the Jewish faith.
- Learning about Jewish religious festivals.
- Looking at Jewish religious artefacts.
- Learning about the core values of Judaism.



## Homework

It is very important that your child practises their times tables and spelling regularly at home. These core skills, combined with regular wide-reading will greatly support your child's learning at school.

Homework tasks will be given out once a fortnight. Half-termly topic projects will also be given out to students to assist their learning in class.

