

Reading

It is an expectation that your child is reading for 10-20 minutes each day.

It is most important that your child reads EVERY DAY.

After reading children it is important for children to be asked questions about what they have read. We want to develop their skills of understanding, inference and deduction. For them to understand why the writer has selected the words they have and what effect the punctuation has had on the piece. It's also great if they can start selecting WOW words. These are exciting and adventurous words which will feed directly into their writing. It is also important for children to select books and read independently.

If you have any questions or queries please do not hesitate to contact us.

We have our visit to PGL this half term. The aim of this trip is to explore new things, challenge ourselves, support each-other...and have fun!



Year 6 are also proud to present our end of year production ...



Thursday 18th July @ Betty Layward School Hall.



Betty Layward Primary School Year 6 Class Newsletter Summer 2 2017

Welcome back to your child's final half term in Year 6.

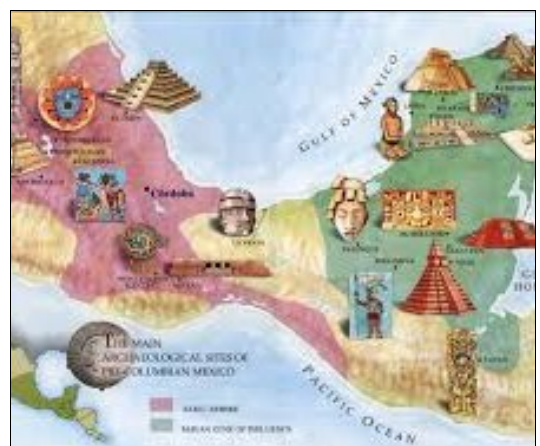
We have a busy term ahead of us with lots of interesting and exciting learning ahead!

We have PGL and the year 6 show to look forward to...it's going to be a very creative term!

If you would like to speak to us or make an appointment please let us know.

**Jason, Helen
Warren, Juliette, Cath and Shabana**

For this half term our topic continues to be The Mayan Empire:



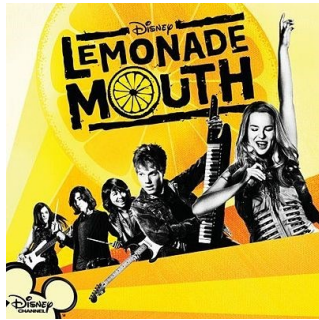
During the topic we will study the Mayan culture.

We will learn about the origins of the culture and how their Empire was formed.

We will investigate who they were through cultural artefacts and present day life and culture in various countries in present day Central America. Keep your eyes on the school website for our published Mayan e-Books!

Announcements

This term we have students travelling to PGL in Liddington, as well as preparations for the almighty year 6 show—Lemonade Mouth.



Literacy

We will be:

- Writing narratives across a variety of genres.
- Exploring non-fiction texts in History and Geography.
- Incorporating computing and digital literacy.

Numeracy

We will be:



- Developing our skills and understanding in a variety of maths investigations.



- Using our mathematics skills in real-world situations through 'practical maths' investigations and problem solving activities.

PE:

P.E will take place on **Thursdays** for the whole afternoon. The children will be training up for Sports Day (June 30th)



It is essential that your child has their kit each week. For reasons of Health and Safety, pupils will not be able to participate in PE lessons if they do not have their PE kit.

History/Geography

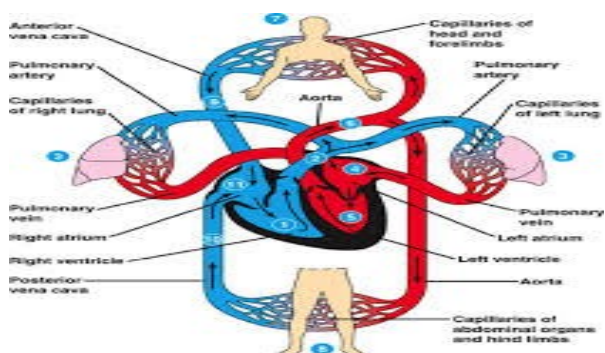
We will be:

- Learning about the Mayan culture.
- Exploring the geographical region.
- Exploring why the Mayan Empire came to an end.

Science

We will be:

- Exploring aspects of how the human body works focusing on the circulatory system



What else would you like to find out about the Mayans?

Religious Education

We will be: Learning about a variety of belief systems.

PSHCE

We will be:

- Exploring how to make positive choices after transitioning onto year 7.
- Reflecting on our time at Betty Layward and assisting other students around the school transition into the new year.
- Learning about SRE (Reproduction).

Spanish

We will be: Focusing on core skills to transfer to secondary language study.

Art & D.T.

We will be: Focusing on creating the sets, scenery and props for our musical.

Music and Drama

YEAR 6 SHOW!