

## Reading

It is an expectation that your child is reading for 10-20 minutes each day.

**It is most important that your child reads EVERY DAY.**

As a school we use a reading program called 'Destination Reader'. This is a interactive and strongly supported approach to reading instruction that builds comprehension skills of readers at all levels.

Parents can help by listening to their children read and ask questions such as:

- \*What do you predict will happen next to that character?
- \* How do you think the character feels in this situation? Why?

If you have any questions or queries please do not hesitate to contact us directly, via the school office or in the playground.



## Trips

During the term there will be class trips to enrich and support the work your child is doing in class. If you can come with us on any school trip this is greatly appreciated.



It is lovely to have parents/carers with us and I know it adds a boost to you child's day too.



## Useful Websites:

These will be used to support and extend your child's learning:

- [www.history.org.uk](http://www.history.org.uk)
- [www.bbc.co.uk/history](http://www.bbc.co.uk/history)
- [www.bbc.co.uk/schools/ks2bitesize](http://www.bbc.co.uk/schools/ks2bitesize)
- [www.primaryhomeworkhelp.co.uk](http://www.primaryhomeworkhelp.co.uk)
- [www.studyladder.co.uk](http://www.studyladder.co.uk)



## Betty Layward Primary School Year 6 Class Newsletter Spring 1 2017

Welcome back to your child's second term in Year 6.

We have a busy term ahead of us with lots of interesting and exciting learning ahead of us!

If you would like to speak to us or make an appointment please let us know.

Helen, Juliette and Shabana—Year 6 Ruby  
Jason, Warren and Cath—Year 6 Chilli

For this half term our topic is:

## Crime and Punishment



During the topic we will learn about crime and punishment through history. We will learn about the work of the police force, how they were formed, and how they investigate crime. We will also compare how different crimes are punished now and through various periods of history.

We also have a very interesting trip planned!

## Announcements

This half term we will be visiting The Royal Courts of Justice and taking part in a mock trial.

**Year 6 Ruby— Wed 25th  
January**

**Year 6 Chilli—Fri 27th  
January**

Packed Lunches Required



Both classes will also be attending the Hackney Junior Citizenship Scheme trip on **Tuesday 10th January** at Hackney Museum. There are no changes to regular school times and lunches on this day.



## PE:



P.E will take place on **Thursdays (Both Chilli and Ruby)** for the whole afternoon.

It is essential that your child has their kit each week. For reasons of Health and Safety, pupils will not be able to participate in PE lessons if they do not have their PE kit.

## History

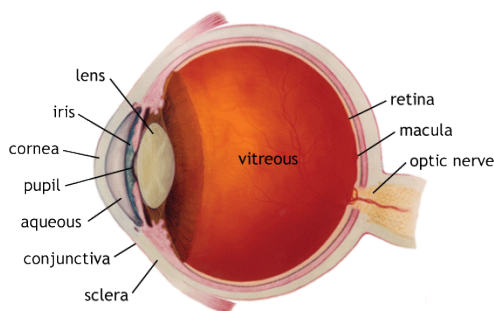
We will be:

- Learning about the history of the police force and how they were formed.
- Looking at our justice system today and comparing it to different periods of history.
- Exploring crime and punishment and how that has changed over history.

## Science

We will be:

- Learning about light, shadow and the eye.



## Literacy

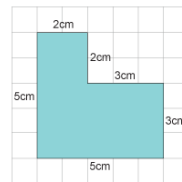
We will be:

- Writing fiction: retelling stories, creating our own narratives, using the flashback technique.
- Writing persuasive texts, linking this to our crime and punishment topic.

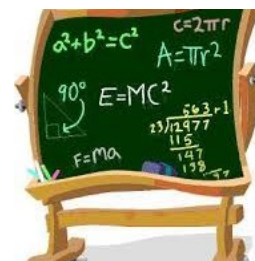
## Numeracy

We will be:

- Solving word problems with the four operations.
- Calculating area and perimeter of compound shapes.
- Representing data, using line graphs and pie charts.
- Learning and applying the language and representation of probability.
- Solving word problems with fractions and ratio.



We ask that all children revise their times tables. They are the foundation of ALL primary maths!



How much do you already know about the law?

## Religious Education

We will be :

- Making connections and comparisons between the beliefs about God within different religions.
- Learning about Hajj and Id-UI-Adha.

## PSHCE

We will be:

- Looking at justice within society and the law.
- Transition to secondary school.
- Participating in the Hackney Citizenship scheme.

## Music & Singing

- Year 6 Ruby will be having music with Barney.
- Year 6 Chilli will be having singing with Mel.

## Homework

Your child will receive three pieces of homework per week. A spelling & handwriting homework. One related to Maths and one to Literacy. Please help them with this at home.

